



# SPS NEWSLETTER

## *"Bringing Brilliance to Art and Life"*

September-October 2011

### *FROM THE PRESIDENT*

#### Inside this issue:

Message from the President	1
SPS Events Calendar	2
The Board	2 & 3
General Meeting Review	3
Make Own Pastels Review	4
New Make Your Own Pastels Workshop	4 & 5
Important IAPS News	5
SPS Members Star in Mother Lode Show	5
Signature Membership Show	6
New Signature Members	6
Members Bulletin Board	7
Changes for Winter Membership Show	8
EDAC ArtSpace Gallery	8
3rd Saturday Art Walk	8
Art Shows to See	9
Art Shows to Enter	9
Urania's Art Tidbits #8	10
Anita Wolff Biography Out Now	11
New Member Highlights	11
Membership Updates	11
Groups and Classes	12

Dear Members and Friends of Sierra Pastel Society,

Do you sense a feeling of autumn in the air? I love this time of year. Of course this gives me the opportunity to use my favorite color in my paintings. You may know that I use burnt sienna or orange as an under painting in almost all of my work whether it is oil or pastel. I love to place various colors of blue or gold on top of it as it seems to shimmer and give much more contrast than on a tamer color. Speaking of painting, I am a little behind on my goal of one painting per week. This means that I may not make it since so much happens in the last part of this year. I did manage to complete 9 small paintings that each had a different type of under painting. I found that as usual my favorite one did use burnt sienna. (The studies that had Payne's gray as an under painting seemed way too cold for me.)

If you missed our Make Your Own Pastels workshop, you might be pleased to know that we have already scheduled another for November 12th. If you're interested, let me know...[conniepastels@gmail.com](mailto:conniepastels@gmail.com), or 530-644-8664. I am starting a list as of this newsletter. According to the comments, everyone had a good time and went home with more than 25 pastels. We had some colors left and I will supplement them so you can make different colors if you attended the past workshop. Can't guarantee the nice weather with lunch on the deck this time, but we can probably work around the chance for snow. (See the report on the workshop later in this newsletter.)

Our membership meeting, held on August 20<sup>th</sup> was outstanding. Robin French Stein gave a wonderful presentation on the framing of pastels. We all know what a challenge that pastel dust can provide. Thank you all for your attendance.

By the time you receive this newsletter, our signature review will be almost completed. The response has been good and the juror was pleased with the quality of the work. The results will be provided at a later date. All of you new signature members will want to enter our signature show this November 15<sup>th</sup> to Dec. 3<sup>rd</sup>. This show will precede the membership show. If you are a signature member and wish to enter both shows, however, you must enter different paintings in each.

The membership show and signature show plus our holiday dinner are all in the planning stage at this time. Be sure and have your paintings ready for the membership show which runs from Dec. 6<sup>h</sup> to January 7<sup>th</sup>. This should be a good time for some holiday shoppers. We had several sales at our last show! What a great gift for our artists.

In the meantime be sure and enjoy the remaining days of summer and the beginning of fall. Keep painting and put these beautiful colors down for posterity.

Sincerely,

Connie Randmaa

President, Sierra Pastel Society

**SPS EVENTS CALENDAR for 2011\***

**SEPTEMBER 24th and 25th** and **OCTOBER 1st and 2nd**—**Two Week-ends 10am to 5pm** Studio Tour sponsored by PAA . Check out their website: <http://www.placervillearts.com/>

**OCTOBER 11th, Tuesday**—Deadline for entry reservations for the Signature Membership Show. See page 6.

**NOVEMBER 12th, Saturday**—Make Your Own Pastels Workshop. See page 4 and 5.

**NOVEMBER 14th, Monday 9am to 11am**—Intake of Entries for Signature Show. See page 6.

**NOVEMBER 15th, Tuesday** — **DECEMBER 3rd, Saturday** Signature Membership Show Displayed at EDAC's ArtSpace open to the public. See page 6.

**NOVEMBER 19th, Saturday 4pm** —Signature Show Reception (3<sup>rd</sup> Sat. Art Walk). See page 6

**DECEMBER 4th, Sunday Noon to 2pm**—Take down and pick up for Signature Show. See pg.6

**DECEMBER 5th, Monday 9am to 11am** —Intake of Entries for Winter Membership Show at EDAC's ArtSpace. See page 8.

**DECEMBER 6th, Tuesday**—**JANUARY 7th, Saturday** —Winter Membership Show at EDAC's ArtSpace open to the public. See page 8.

**DECEMBER 17th, 4pm**—Membership Show Reception (3<sup>rd</sup> Sat.) and Holiday Party (more details in next newsletter.) See page 8.

**JANUARY 8th, Sunday Noon to 2pm**—Take down and pick up for Membership Show. See page 8.

*\*Please note, we have tried to lay out a general calendar of events for the year, but many items are tentative at this point and subject to change. Information will be updated in future newsletters, on the website, or by email. If you have a suggestion for an event and/or would be willing to be in charge of one, please contact Connie Randmaa, SPS President (530) 644-8664.*

**For further information, and to check recent event changes if any, see our website: [www.sierrapastelsociety.net/events](http://www.sierrapastelsociety.net/events)**

**THE BOARD 2011****President****Connie Raandma**[conniepastels@yahoo.com](mailto:conniepastels@yahoo.com)

530-644-8664

**Vice President****Kaaren Poole**[kspoole@hughes.net](mailto:kspoole@hughes.net)

530-672-0943

**Secretary****Robin French Stein**[temari530@yahoo.com](mailto:temari530@yahoo.com)

530-647-1603

**Affiliate Director****Beverly Austin**[bev@bevaustinfineart.com](mailto:bev@bevaustinfineart.com)

530-642-0946

**Treasurer****Judy Perry**[judy@judithperryfineart.com](mailto:judy@judithperryfineart.com)

530-621-1614

**Membership Director****Judy Perry**[judy@judithperryfineart.com](mailto:judy@judithperryfineart.com)

530-621-1614

**Special Events Hostess****Gloria Vernon**[rgvernon@directcon.net](mailto:rgvernon@directcon.net)

530-621-2468

**GENERAL MEETING AND FRAMING DEMO**

**Public Relations Director(s)**

**Kathy Frevert Levenson**

[kathyhoward85@yahoo.com](mailto:kathyhoward85@yahoo.com)

530-676-8532

**Susan Levitsky**

[slevitsky@sbcglobal.net](mailto:slevitsky@sbcglobal.net)

530-676-0781

**Newsletter**

**Carolyn Lewis**

[carolynlewis1525@comcast.net](mailto:carolynlewis1525@comcast.net)

530-295-4955

**Exhibition Director**

**Pat Stoddard Aragon**

[paragon6261@wildblue.net](mailto:paragon6261@wildblue.net)

530-620-2432

**IAPS Liaison**

**Kathy Hall**

[susihall@comcast.net](mailto:susihall@comcast.net)

[kathy@khalart.com](mailto:kathy@khalart.com)

530-620-3400

**Workshops**

**Thaleia Georgiades**

[thaleia@directcon.net](mailto:thaleia@directcon.net)

530-626-9188

**Web Coordinator**

**Kathy Frevert Levenson**

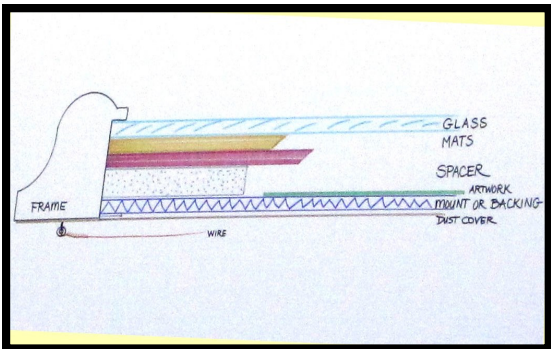
[kathyhoward85@yahoo.com](mailto:kathyhoward85@yahoo.com)

530-676-8532

Our August 20th meeting came to order at 1:30 with President **Connie Randmaa** making some timely announcements. **Kathy Hall** spoke about the Signature Show in November and IAPS Convention. **Pat Aragon** reported on past Spring and upcoming Fall Membership Shows and talked about the new increase for awards that will affect the two upcoming shows. Connie mentioned that the new Signature members should be revealed soon. More details on the above are in this newsletter

Connie also mentioned that three Board positions will be vacated at the end of this year and invited the members to start thinking about filling them.

**Gloria Vernon** furnished a nice assortment of refreshments for this 3 hour meeting.



Robin's diagram of a properly framed pastel

**Robin French Stein** has 25 years of professional framing experience beginning in her home state of Connecticut. We were lucky to have her give us a very informative demonstration on how to frame pastel paintings from the "Anatomy of a Frame Job" to "Aesthetic Choices".

She pointed out the unique problems associated with pastel preserving, framing, handling, shipping, and protecting the work for the end of the journey. Robin gave us many tips on products such as type of glass, spacers, mats, frames, hardware, and tools. She also stressed the importance of using proper framing and matting methods to enhance the work of the serious artist. **Judy Perry** volunteered some of her prints and Robin framed one of them beautifully, canceling out the notion that all mats must be white!



~~Carolyn Lewis

## ***MAKE YOUR OWN PASTELS WORKSHOP REVIEW—Hosted by Connie Randmaa***

On July 24<sup>th</sup>, 15 people showed up at my studio in Pollock Pines, to make pastels. Fortunately quite a few people managed to carpool so we didn't have to park in the street. Everyone was right on time. After a quick demonstration, everyone pitched in to make their own sticks of pastel.



The basic technique involved mixing white pigment with a colored pigment of your choice to make various hues of a single color. After the initial blend of white and a color was completed, a small stick of pastel was made with one half of the blend. The other half had more white added to it resulting in two more sticks of a lighter hue. This process was repeated several times and each stick was a lighter value. Many beautiful color series resulted. Once this technique was mastered, more than one color could be blended and the results were unlimited. Of course, I haven't mentioned the "slight mess" this all makes. There were tarps on the floor and many boxes of baby wipes and plastic gloves were used by all.

What fun we all had! I heard someone even managed to make more than 40 small sticks of pastel. I've been using the sticks that I made and am very happy with them. Fortunately, all my current pastels were available for me to look at and I knew what colors I wanted to create. Next time, I need to have the attendees decide ahead of time what colors they need to add to their palettes.

After a lunch break everyone went back to work and by 3:00 everyone had managed to create more than 25 sticks of pastel. There were some colors remaining that had not been used and several people requested another workshop to be held this November. I'll order more white for mixing according to the number of people who sign up for this workshop. Please let me know if you're interested by contacting me via e-mail [conniepastels@gmail.com](mailto:conniepastels@gmail.com) or by phone, 530-644-8664. More details will be sent out at a later date.



Thank you for your attendance and especially for helping me to clean up my studio. Hoping to see you November 12th.

~~Connie Randmaa

## ***BACK BY POPULAR DEMAND—Make Your Own Pastels Workshop for November***

For those of you who missed out in July and those who want more, make plans now to reserve Saturday, November 12, 2011, 9:00 to 2:00 for a very special workshop. **Connie Randmaa** will be presenting, for a second time, how to "Make Your Own Pastels". Everyone will go home with at least 60 sticks of pastels. (Depending on the size you make!) You will be able to make a range of values for all the different colors that you select. We can share our creations with others in the workshop resulting in an amazing array of pastels. (continued page 5)

***BACK BY POPULAR DEMAND (continued)***

Each attendee will receive an entire batch of the white pigment and will be able to use this as a basis for creating multiple colors. **Due to the cost of the white pigment and the need to order the materials in advance participants will need to sign up prior to October 1st.** Only enough materials for each participant will be ordered. The cost for the workshop is only \$50.00 each. This workshop is more expensive than the previous workshop due to the larger amount of pastels each participant will be able to make. The location will be in Pollock Pines at Connie's studio. To sign up please call or e-mail Connie (530-644-8664 or [conniepastels@gmail.com](mailto:conniepastels@gmail.com)) to reserve a space as soon as possible. You will need to send a check for \$50.00 made out to Connie Randmaa to reserve your space. Mailing address is **Connie Randmaa, 6130 Lynx Trail, Pollock Pines, CA 95726.**

***IMPORTANT NEWS FROM IAPS***

The **International Association of Pastel Societies (IAPS)** prospectus is now available for the **19<sup>th</sup> IAPS Exhibition**, the 2011 Web Show, with a deadline of October 15<sup>th</sup> for entries. Check out "Exhibitions" on their website, [www.pastelinternational.com](http://www.pastelinternational.com). Remember that acceptance into IAPS exhibitions is how points are accrued toward **Master Circle** status. More information regarding the designation of Master Circle is available on their website, also in the "Exhibitions" section.

Photos and a video of the **2011 Convention** held in Albuquerque in June are now viewable on the IAPS website under "Conventions". If you've never attended one of the IAPS biennial conventions, check these images out to get an idea of the phenomenal experiences offered to pastel enthusiasts from around the world during these conventions. For those lucky enough to attend this convention enjoy the memories!

*~~Kathy Hall, IAPS Liaison*

***SPS MEMBERS STAR IN MOTHER LODGE SHOW***

Nine SPS members were juried into the Mother Lode Show that ran from August 14 through August 28 at the Shakespeare Club in Placerville. AND, three of them won major awards!



*Pastel Society of the West Coast Award* went to **Gloria Vernon** for "Cyclists", *Connie and David Zelinsky Award* went to **Kaaren Poole** for "Fairy Gourd", and *Placerville Arts Association Award* went to **Gloria Vernon** for "Yarn Basket". Congratulations ladies!



Other SPS members in this show were: **Thaleia Georgiades, Lucinda Johnson, Frankie Paquin, Carol Sheets, Mary Kay Stahl, and Jean Stiles.**



What a wonderful representation of pastel paintings in an open medium show.

*~~Carolyn Lewis*

## **SIGNATURE MEMBERSHIP SHOW Planned for November**

SPS's second biennial Signature Membership Show is scheduled for November 15<sup>th</sup> through December 3<sup>rd</sup> at EDAC's *ArtSpace* Gallery to showcase the work of our members who have achieved Signature status. Intake of paintings will be November 14<sup>th</sup>, and pickup December 4<sup>th</sup>. Entry reservations will be required by October 11<sup>th</sup>. Further information and forms will be e-mailed to the Signature members in the near future, and available on our website soon. One change from the original Signature Membership Show of 2009 - there will be no categories in this show. Regardless of subject matter, Awards of Excellence and Awards of Merit will be determined by our renown judge, **Marbo Barnard**, PSA, along with a Best of Show. The monetary award amounts are also increased, with Awards of Excellence receiving \$40; Awards of Merit \$30, and the Best of Show \$50. The viewing public will vote to determine the Public's Choice Award, and the artists will have a chance to vote to select the winner of an Artist's Choice Award on the evening of the reception, November 19<sup>th</sup>.

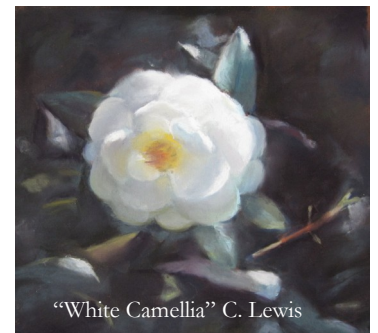
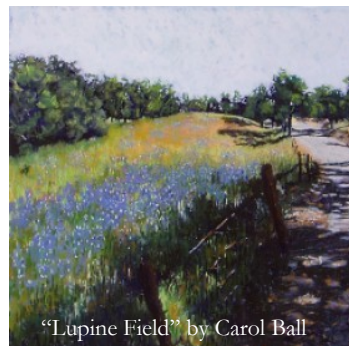
Signature members entering this exhibition may also enter the Signature division of the SPS Winter Membership show which follows in December, but must enter different paintings. For further information, contact show chair, **Kathy Hall**, (530) 620-3400.

## **NEW SIGNATURE MEMBERS "REVEALED"**

The signature review process for 2011 has been completed. The Sierra Pastel Society would like to congratulate the new signature members. Their work has passed a thorough review by our juror. The criteria for acceptance was based on 5 different areas of importance in the quality of any art work; color, composition, value, ability to use the medium, and originality. Each participant was given a critique by the juror of each of 3 paintings submitted for review. A total of 65 or more points out of 75 possible were required for acceptance.

Acceptance of signature member status enables the artist to place SPS along with their name on their artwork. This indicates to all viewers the enhanced status of the artist in the society's roster. It also enables the artist to compete with their peers in any Sierra Society membership show and at the special signature membership show held every other year.

Our new signature members include **Pat Stoddard Aragon, Carol Ball, Carolyn Lewis, Jennifer Rowe, Carol Sheets, Urania Christy Tarbet, Carolyn Thompson, Jim Tyler and Marti Walker**. Once again, congratulations to all of you. We hope to see your work in the signature membership show that will be held this November in the EDAC Art Space in Placerville, CA.



## MEMBERS "BRAG RAG" & BULLETIN BOARD

**Carol Sheets'** painting, "Wishon Overlook" was accepted into the 2011 PAA Mother Lode show.

**Ada M. Passaro's** "Colorful Commemorations" was selected to be exhibited at the Japanese Interpretive Center in Manzanar. "Plaza Perspective" earned an Honorable Mention at Dos Lagos Summer/Arts Competition. She taught a Summer Pastel workshop at the Riverside Art Museum and will be teaching another in the Fall.

Special permission being granted to **Urania Cristy Tarbet, PSA**, to paint on former President Ronald Reagan's Santa Barbara Ranch, she invited a number of artists including several SPS members (**Mary Ann Brodrick, Thaleia Georgiades, Terri Ford and Sam Liberman**) to join in this special plein air painting experience in May. A special video captured by Steve Dorothy, Editor of the Plein Air Magazine who joined the group the first day, can be seen on the magazine's website. A full article of the event will be published in the upcoming Fall issue of Plein Air Magazine. Be sure to check it out.

*'Pat Stoddard Aragon submitted 2 pieces of artwork and both were juried in to "Art at the Classic" an all media all 'horse art' show that goes along with the 25<sup>th</sup> Annual Draft Horse Classic held every year at the Nevada County Fairgrounds in Grass Valley, CA. The dates of the Art at the Classic are Sept 22-25<sup>th</sup>. There are all kinds of horse show events for the draft horse enthusiasts going on every day along with the art show.'*

**Deborah Matlack** was awarded a Third Place for her Pastel "The Fencer" in The Society of Western Artists 61st Annual, She also won Best of Show for "The Lavender Hat" and First in Pastel for "Scholar's Pastime" in the Santa Clara Art Assn's Annual at the Triton Museum. Three of her pastels will be at University Art, Sacramento, September 10 to 30, in their current competition

Two of **Ellen Dreibelbis'** pastels were selected for the Alameda County Public Art Purchase Program. They will be installed in the Alameda County Clerk-Recorder's Office in Oakland and the new Behavioral Health Care Services Building in Hayward. These, in addition to 2 already installed in the Alameda County Court House in Hayward, make 4 in the collection of the County. Ellen's painting, "Seeing Beyond", was exhibited in the PSWC exhibition, PASTELS USA, at the Haggin Museum in Stockton, CA., April-June of this year.

**Kat Davis** just finished the Pastel USA show in Stockton Ca. Upcoming show at the Hallie Brown Ford Gallery in Roseburg Or in September. Also doing a festival display in Medford Or on Aug 20th. This is a show for charity (Boys and Girls Club) and is sponsored by Thunderstruck Custom Motorcycles. It's a great event every year and attended by nearly 5000 people! Kat has a new website up and running now which is [www.katdavisstudios.com](http://www.katdavisstudios.com) and showcases much of her current work.

**Kaaren Poole** feels honored to have learned that she was accepted into PSA!

**Urania Christy Tarbet's** "American River #1" was juried into the 39th Annual Pastel Society of America's Exhibition at the National Arts Club in New York. She will be visiting New York to attend the Awards banquet, visiting the Metropolitan Museum, and the Salmagundi Art Club at a get together dinner of art friends. She will also lunch at the famous Cafe des Artistes (now known as The Leopard at Des Artistes), made famous by the murals of beautiful nude ladies that surround the walls, painted by Urania's famous second cousin, Howard Chandler Christy. The cafe is the famous meeting place for Manhattan society. Urania promises to share more about her trip in our next newsletter.

***CHANGES FOR WINTER MEMBERSHIP SHOW –Include Higher Monetary Awards!***

Several changes will be noted December 5<sup>th</sup> when entries are delivered to EDAC’s ArtSpace Gallery, Placerville for the Winter Membership Show. After considerable deliberation on whether and how to offer more substantial cash awards, the SPS Board voted for a slight increase in the entry fees (from \$6 to \$7 for judged entries, and \$5 for unjudged miniatures). The categories were also re-arranged and will be one less in number than in previous shows. Besides the Signature Category and the Miniatures, there will be three categories: 1) Landscape/Seascape, 2) Still Life/Floral/Abstract, and 3) Portrait/Figure/Animal. This will result in fewer awards, but the monetary amounts will be higher! First Place in each of the 3 categories will receive \$40, Second Place \$30, and Third Place \$20. Honorable Mentions will receive a ribbon only. Winners in the Signature Category will be given Awards of Excellence (\$40) and Awards of Merit (\$30). The winner of the Best of Show Award will receive \$50.

Remember that this show will be on display during the Christmas holiday season, with lots of attention from downtown shoppers, so with that in mind – it’s time to get painting! More details regarding this show plus the entry form will be coming out in the next (November/December) newsletter. If you would like to volunteer your help and join the team putting on this show, contact show chair, **Kaaren Poole** (530) 672-0943.

***EDAC’S ARTSPACE GALLERY Feeling Effects of Economic Downturn***

SPS has been privileged to hang their last three membership shows at the **ArtSpace Gallery** in Placerville. The gallery is part of the El Dorado Arts Council (EDAC), a non-profit organization promoting the arts.

The economic downturn is resulting in less funding for this organization’s services and for the gallery we so appreciate. One way we can help is to purchase individual memberships with EDAC (\$35). Members not only show their support this way, but they also benefit by having opportunities to show their artwork in various other EDAC-sponsored art shows during the year - not just our SPS shows. Drop by the gallery at 459 Main Street, or visit their website, [www.eldoradoartscouncil.org](http://www.eldoradoartscouncil.org).

***3RD SATURDAY ART WALK —Downtown Placerville***

Don’t forget the wonderful opportunity to visit Old Town Placerville’s 3<sup>rd</sup> Saturday Art Walk sponsored by the Placerville Downtown Association. The galleries stay open for this event from 5pm to around 9pm and look forward to seeing you! Strolling downtown, dining, and some late night shopping on these warm nights can be a real treat!

[www.placerville-downtown.org/thirdsaturdaynight.html](http://www.placerville-downtown.org/thirdsaturdaynight.html)

**ART SHOWS TO SEE**

**"Magnum Opus XXII"** through September 3<sup>rd</sup>, Sacramento Fine Arts Center, 5330-B Gibbons Dr., Carmichael. Open Wed. through Saturday 11 a.m. – 3 p.m.; Tuesdays 11 a.m. – 7 p.m. [www.sacfinearts.org](http://www.sacfinearts.org)

**"Go With the Flow"** the WASH Open Show September 6<sup>th</sup> – October 1<sup>st</sup>, Sacramento Fine Arts Center.

**"Landscapes from the Age of Impressionism"** through September 18<sup>th</sup>, and **"Transcending Vision: American Impressionism"** now through September 25<sup>th</sup>, Crocker Art Museum, 216 'O' St., Sacramento. Open Tues. and Wed. 10 a.m. – 7 p.m.; Thurs. 10 a.m.- 9 p.m.; Fri. and Sun. 10 a.m. – 5 p.m. [www.crockerartmuseum.org](http://www.crockerartmuseum.org)

**"Gardens & Grandeur: Porcelains & Paintings by Franz A. Bischoff"** Now through October 23<sup>rd</sup>, Crocker Art Museum. [www.crockerartmuseum.org](http://www.crockerartmuseum.org)

**"September in Paris"** Now through October 1<sup>st</sup>, featuring plein air works of Paris by Charles Waldman. Knowlton Gallery, 115 S. School St., Lodi. Open Tues.- Sat. 11 a.m. – 5 p.m. <http://www.knowltongallery.com/html/calendar.html>.

**"This Splendid Garden"** October 3<sup>rd</sup> – November 26<sup>th</sup>, acrylics and pastels by Gil Dellinger. Knowlton Gallery.

**"Bold Expressions"** NCA Open Show, October 4<sup>th</sup> – 29<sup>th</sup>, Sacramento Fine Arts Center. (Address & hours above)

**ART SHOWS TO ENTER—Listed by Entry Due Dates**

**October 10<sup>th</sup>** Entry reservations due for **SPS Signature Membership Show**. See info in this newsletter page 6.

**October 15<sup>th</sup>** **IAPS 19<sup>th</sup> Exhibition – the 2011 web show**. Information and prospectus available at [www.pastelinternational.com](http://www.pastelinternational.com) under the "Exhibitions" tab. Remember that artists whose work is accepted into IAPS exhibitions can accrue points towards Master Circle status.

Remember to check the **Call for Entries** and the **Competitions** sections in the back of your **Pastel Journal** magazines for additional pastel competitions to enter. If you are aware of other competitions coming up that you think our members might be interested in, please call **Kathy Hall** (530) 620-3400, or email: [susihall@comcast.net](mailto:susihall@comcast.net) so she can get the information into this section.

**URANIA'S ART TIDBITS #8****HOW TO MAKE A NAME FOR YOURSELF IN THE ART WORLD**

One of the most asked questions in the world of art, "How do I get recognized as a serious and professional artist?" The answer is simple...NAME RECOGNIZATION! Of course, one may ask how does this come about? Grouped in this answer, are diverse ways, however the following list can help start you on that journey. This takes time, tenacity, perseverance, commitment, dollars and the dedication of a brain surgeon.

If you are interested as a serious artist wanting to commit to this path, read on...if you are just an interested party, read on...it will make you appreciative of the many individuals that take this long and arduous path. The first steps:

Education...school yourself in the many genres of art. Take as many art classes/workshops as possible. Study only with the people that you admire their work. Remember some people can paint, but cannot teach. Inquire among art friends about who they recommend as good teachers. Don't study with any one art teacher too long...you might become a mini/..... (insert a name). Study with many good artists, take all the good things each taught you, then go to your studio and find yourself.

Exposing your art to the world...when you feel really good about your art, enter a local show first, when you are accepted in several juried exhibitions, and have won a few awards, enter a regional show. Follow the same path to national, then international exhibitions.

Join several art organizations'...become active.

Publicity...when you start winning awards...shout it to the world. Send this good news to your local newspapers, magazines, and your member art associations. Share with your family, friends, and others through facebook, a blog, and/or your own newsletters.

This is just the start...there is not enough room to give it all to you in my art tips. However, if anyone is interested...I can set a date for an in-depth marketing class, and share with you my how-to journey of many years of success as an artist. I just wish that the height of my career were possible for all of you when I was earning \$100,000 to \$150,000 a year. Those days will take a while to return, however all things are possible. With a lot of hard work and all of the adjectives listed above expounded on...a good lucrative career in the world of art can be yours.

If interested...call me: 530-644-4899 for more info. If enough people are interested, I'll set a date.

~~Urania Christy Tarbet

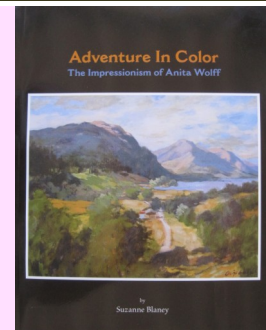
**ANITA WOLFF'S BOOK IS HERE**

***"Adventure in Color—The Impressionism of Anita Wolff "***

by Suzanne Blaney

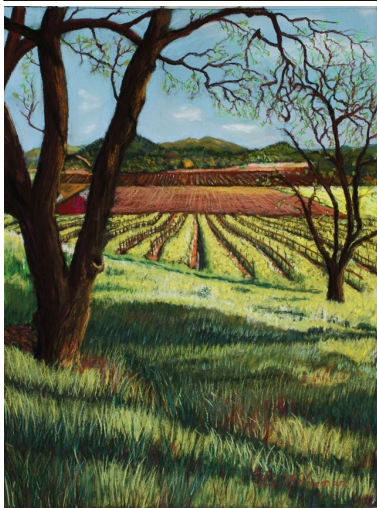
Now available to purchase online at [www.susanneblaney.com](http://www.susanneblaney.com) Keep watching for updates to this site and [www.anitawolffstudio.com](http://www.anitawolffstudio.com)

This lovely coffee table book makes a great gift and can be had for \$24.95 plus tax. In addition to her biography with many family photos, there are quotes from Anita about her life, chapters of art techniques and tips, as well as 41 color photos of oil, pastel, and watercolor paintings.



*For more information regarding upcoming book signings and other details, contact Suzanne Blaney at 530-885-7223.*

**NEW MEMBER HIGHLIGHTS**

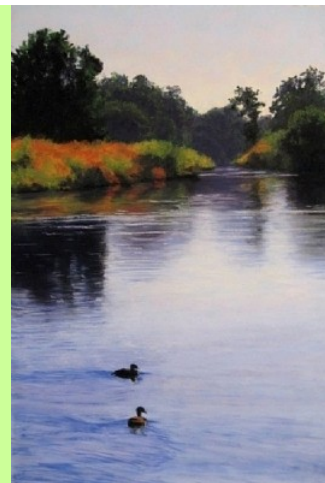


Hello all; I am pleased to introduce myself as a new member of the Sierra Pastel Society. I am a 68 year old retiree who is now pursuing art as my primary enjoyment, when I am not gardening in our beautiful yard. I have been painting with pastels for three years and love the medium. Previously I had worked in oils, water color or pencil and when I retired my lovely wife gave me lessons with award winning pastel artist Reif Erickson here in Auburn as a birthday present. Cindy felt I needed to get back into art. I was so delighted with the medium with no wait for anything to dry. I studied with Reif for a year and we remain good friends.

I am a member artist with Placer Arts, The Blue Line Gallery in Roseville, and also a member of the Pastel Society of the West Coast. I look forward to meeting you and sharing our love of the medium.

~~Paul M Harman

Originally a watercolorist, I made the switch to pastels after seeing Connie Randmaa's works at an Art Fiesta Event years ago. I've also studied with Gregory Kondos, Ning Hou, Victoria Brooks, Gary Pruner, and most recently Calvin Liang. I've been a featured artist at the John Natsoulas Gallery in Davis in their California Landscape Exhibit since 2005, had a one man show there in 2008, and been a demonstrator at the Conference for past 4 years. I participate yearly in the Winters Plein Air Event, taking First Prize the 1st year, and 2nd and 3rd prizes in subsequent years.



~~Marti Walker

**MEMBERSHIP UPDATE—Welcome to New and Returning Members!**

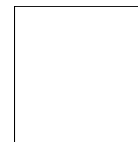
Diana Carlson

530-676-0555

ABSnDiana@gmail.com



**SIERRA PASTEL SOCIETY**  
P.O. Box 1936  
Placerville, CA 95667



*Place Address Label Here*

**We're on the Web!**  
[www.sierrapastelsociety.net](http://www.sierrapastelsociety.net)

## **CLASSES AND GROUPS**

**Tuesday Morning Group** at Placerville Senior Center, ALL MEDIA, 9:00 a.m.-noon. Call Valerie Bye at (530) 622-4111

**Anita Wolff**, Oil/Pastel/Watercolor. Classes are held on Friday by appointment. Classes are semiprivate. Call (530)644-6814

**Thaleia Georgiades**, Pastel Painting and Fundamentals of Drawing Design and Color, or Kids Art. For schedules: email Thaleia at: [thaleia@directcon.net](mailto:thaleia@directcon.net) or call (530)626-9188

**Irene Lester**, Pastel. School of Light and Color . Call (916)966-7517

**Blanche Kawahara**, Pastel. (530)622-8026

**Sherry Hunting Studio**, Oil and Pastel. Two year apprenticeship program in Classical Realism, specializing in portraiture. (530)677-1282

Website: [www.sherryhuntingstudio.com](http://www.sherryhuntingstudio.com)

**Urania Christy Tarbet**, PSA Life Member and IAPS Master Circle-Founder/President IAPS. Private and Semi-private classes by appointment during summer and fall. Studio and information. (530)644-4899

